

Piranha models fit compact routers and use pendants to transfer files to the machine via USB. The travel area on the FX model: 12"x12"x3" while the travel on the XL is 12"x24"x4". Both come with V-Carve software.



With a more robust build, Shark models fit 2 1/4 hp routers and use pendants to transfer files to the machine via USB. The travel area on the Shark II is 13"x25"x7" and comes with V-Carve software.



Built with industrial grade components, the CNC Shark HD5® features a heavy-duty aluminum and steel reinforced gantry, extruded aluminum router mount system, linear rails and guides on the gantry. Travel on the HD5® is 25"x25"x7" and 25"x50"x7" on the Extended HD5. This the perfect tool for carving or machining a large variety of projects made from wood, soft metals, composites, or plastics.

CNC Accessories



The Solid-State Laser module is fully compatible with all CNC Shark and Piranhas Series CNC machines. All necessary components are included, and the module is easily mounted or removed by simply chucking it into the 1/4" router collet allowing you to virtually plug and play without the need to remove your router.



The Mini 4th Axis Kit gives you the ability to create precision turned spindles, pens, or game pieces with intricate carvings and designs that will astonish you. With virtually a plug and play design, the Mini 4th Axis Kit easily bolts to your CNC Piranha or CNC Shark bed.

KLINGSPOR'S
WOODWORKING SHOP
"Quality Tools and Supplies for the Woodworker"

CHOOSING A CNC ROUTER THAT'S RIGHT FOR YOU



With the different features and sizes available in CNC machines how do you know which one is the right one for you? As you review the different models available ask yourself the following questions.

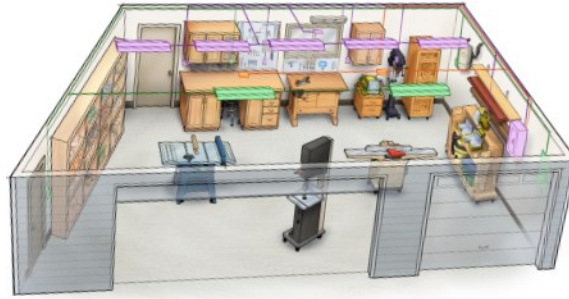
What Do I Plan to Make with My CNC Router?

If you are new to CNC technology this may be an overwhelming question. Your answer may change many times once you understand what your machine is capable of doing, only limited by your imagination and the functionality of your design software. Here are some popular projects where CNC routers are commonly

- used:
- Games
- Personalization
- Signs
- 3D Parts
- Cutting Boards
- Printed Circuit Boards
- Plaques
- Carvings

You may think that CNC routers are only able to cut wood. But there are a variety of materials that can be used on a CNC machine which include but aren't limited to; acrylics, plastics, certain foams, MDF, and soft metals.

These machines are not limited to only cutting and carving materials but with a laser attachment you are able to recreate photos and drawings, engrave, and even cut materials like leather, fabrics and veneers.



Do I Have Space Constraints?

“My workshop is just way too big” said no one ever.

Obviously, we all have a finite amount of space that we can use. Determine what that is and then based on your answers to the first question choose the largest machine that will be able to accomplish the projects you think you will be making. As there is a tiling feature in the software you will be able to use materials much longer than the bed of the machine. However the width of the machine will be the maximum size of the material that you will be able to use. Additionally, if you plan to make many parts at one time, the larger the machine the more parts you will be able to

Do I Have the Time to Learn How to Use the Software?

As with anything new, it takes time to learn how to use the software. While it can be intimidating, programming CNC machines is easier than ever before. Most all of the activity goes on “behind the scenes.” and with any computer program, the more you use it the easier it is to use.

What is My Budget?

CNC machines can start around \$1500 and can go well beyond \$5000. Keep in mind the more you use your CNC router the more ways you will find to use your



Piranha XL Shown with DeWalt 611 Router